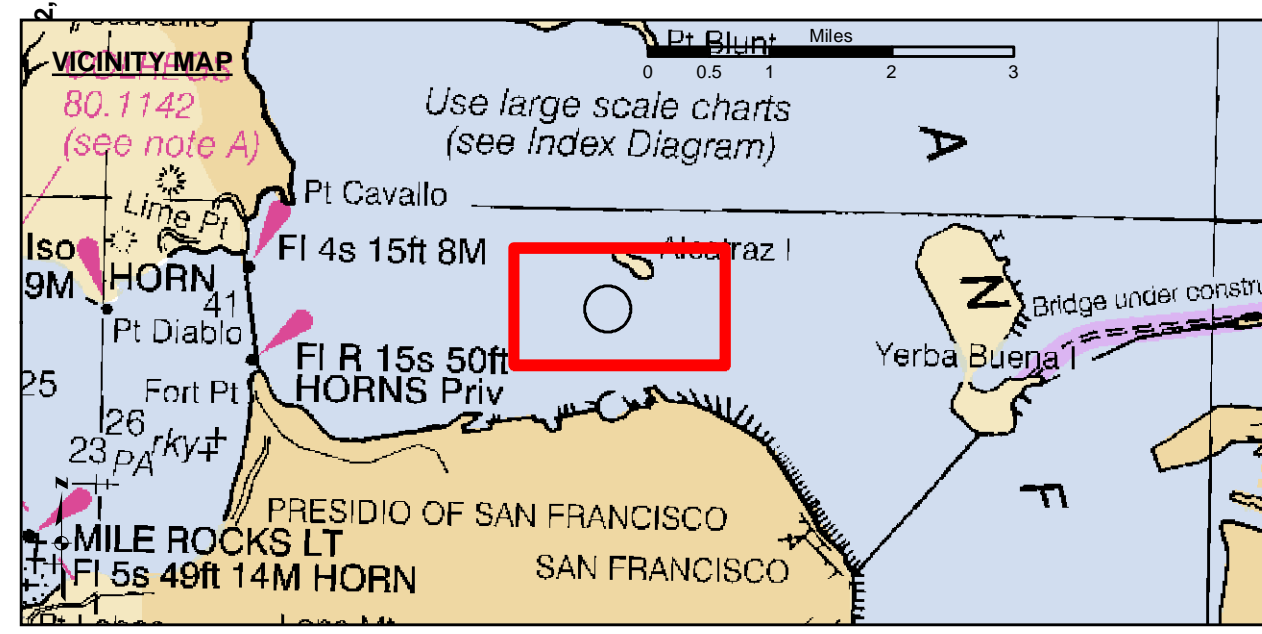
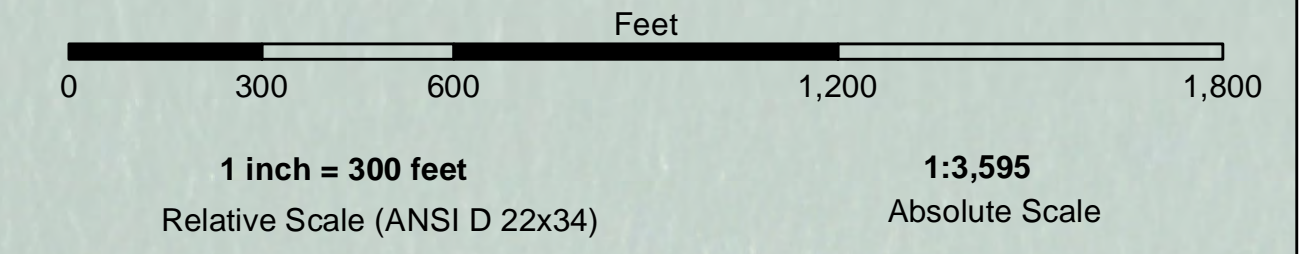


LAMBERT COORDINATES		
POINT	X	Y
U.S.G.S. MON: 57 ELEV. - 14.00	6,005,367	2,123,290
TRANSAMERICA BUILDING	6,011,912	2,117,586
ALCATRAZ DISPOSAL SITE - (SF-11)	6,005,935	2,127,235
1,000 FT. RADIUS	6,005,935	2,127,235
ALCATRAZ LIGHT	6,008,552	2,129,010
ALCATRAZ BUOY	6,008,367	2,127,186



- Federal Navigation Channel
- Shoaling Area
- Placement Area
- Anchorage Area
- Wreck Area
- Submerged Wreck
- Zone III Angle Points
- Beacon, General
- Obstruction Point
- Navigation Buoy
- Navigation Buoy
- Shoalest Sounding\*
- Contour Lines
- Every 10'
- 20' to -120'

NOTES:  
 HORIZONTAL COORDINATE SYSTEM:  
 NORTH AMERICAN DATUM OF 1983 (NAD83). PROJECTED TO THE STATE PLANE COORDINATE SYSTEM (SPCS), CALIFORNIA ZONE III. DISTANCE UNITS IN U.S. FEET.

VERTICAL DATUM:  
 SOUNDINGS ARE SHOWN IN FEET AND INDICATE DEPTHS BELOW MEAN LOWER LOW WATER.

THE INFORMATION DEPICTED ON THIS MAP REPRESENTS THE RESULTS OF A SURVEY CONDUCTED ON THE DATE INDICATED AND CAN ONLY BE CONSIDERED TO REPRESENT THE GENERAL CONDITION EXISTING AT THAT TIME.

BASE MAPS ARE USDA NAIP 2010.

\*SHOALEST SOUNDING PER QUARTER PER REACH

DRAWING NOT TO BE USED FOR NAVIGATION. ONLY CHANNEL CONDITION AT DATE OF SURVEY. THE LOCATION OF ALL NAVIGATION AIDS ARE BASED ON INFORMATION PROVIDED BY THE U.S. COAST GUARD. BUOY LOCATIONS REPRESENT THE POSITION OF THE SINKER ONLY.

SOUNDINGS WERE TAKEN BY FATHOMETER AND ARE SHOWN TO THE NEAREST TENTH OF A FOOT. SOUNDINGS ARE BASED ON THE DATUM OF MEAN LOWER LOW WATER AT THE LOCALITY.

SURVEYED BY THE CORPS OF ENGINEERS.

THE PROJECT DEPTH IS -40 FEET AT MLW.

PLANE GRID AND COORDINATES ARE BASED ON LAMBERT PROJECTION, NAD 83. ZONE III CALIFORNIA AS DESCRIBED IN SPECIAL PUBLICATION NO. 235, PUBLISHED BY THE NATIONAL OCEAN SURVEY.

HORIZONTAL GPS CONTROL:  
 COAST GUARD D-BEACON

VERTICAL CONTROL:  
 BENCHMARK: 180 1336  
 PID: HT0702  
 MLLW = 3.972m(13.03ft)

NOAA STATION 9414290  
 TIDE GAUGE LOCATION: SAN FRANCISCO

**US Army Corps of Engineers**  
 San Francisco District  
 1455 Market Street  
 San Francisco, CA 94103

**DISCLAIMER**  
 The United States Government furnishes this information as a public service without warranty of any kind. The user assumes all responsibility for the use of the information. The United States Government is not liable for any damages, including consequential, arising from the use of the information. The user assumes all responsibility for the use of the information. The United States Government is not liable for any damages, including consequential, arising from the use of the information.

Prepared Under the Direction of:	Chart Date:	Aug 06, 2020
LT COLONEL C.E. DUNNINGHAM	Designed By:	PDT
Submittal:	Hydro Survey Team Leader	PDT
Recommended:	Chief, Hydro Survey Section	PDT
Approved:	Chief, Construction Branch	PDT

**CALIFORNIA**  
 SAN PABLO BAY  
 ALCATRAZ DISPOSAL SITE-SF11  
 CONDITION SURVEY  
 04 AUGUST 2020

**Sheet Reference Number**  
 1 of 1